

# MIDDLESEX COUNTY LOCALITY GUIDE

Written by Darren Petrosino, edited by Joan Betancourt

## Background

### Quick Facts

Middlesex County was first incorporated on March 7, 1683, making it one of New Jersey's four oldest counties (along with Bergen, Essex, and Monmouth). Its county seat is New Brunswick.<sup>1</sup>

Named after the English county of the same name, Middlesex was originally part of the province of East Jersey until it merged with West Jersey in 1702.<sup>2</sup> While first inhabited by the Lenni Lenape Indians, Middlesex's earliest genealogical records are largely shaped by an English settlement in its north and a Scottish settlement in its south. Today, it's one of New Jersey's most ethnically heterogeneous counties, boasting an especially high population of Indian Americans.

Known Beginning Dates for Government County Records <sup>3</sup>						
Birth*	Marriage	Death*	Court	Land	Probate	Census
1901	1683	1901	1786	1766	1786	1830

\*Statewide registration for births and deaths started 1 May 1848. General compliance by 1920.

### Online Research Guides

FamilySearch wiki:

[https://www.familysearch.org/en/wiki/Middlesex\\_County,\\_New\\_Jersey\\_Genealogy#](https://www.familysearch.org/en/wiki/Middlesex_County,_New_Jersey_Genealogy#)

### Geography and Maps

John P. Snyder's [Bulletin 67, The Story of New Jersey's Civil Boundaries 1606 - 1968](#) is available for free on New Jersey's government website.

---

<sup>1</sup> FamilySearch wiki for Middlesex County, New Jersey ([https://www.familysearch.org/en/wiki/Middlesex\\_County,\\_New\\_Jersey\\_Genealogy#Description](https://www.familysearch.org/en/wiki/Middlesex_County,_New_Jersey_Genealogy#Description)) : Accessed 30 Apr 2024)

<sup>2</sup> *Wikipedia* ([www.wikipedia.org](http://www.wikipedia.org)), "Middlesex County, New Jersey." Accessed 30 Apr 2024.

<sup>3</sup> FamilySearch wiki for Middlesex County, New Jersey ([https://www.familysearch.org/en/wiki/Middlesex\\_County,\\_New\\_Jersey\\_Genealogy#Description](https://www.familysearch.org/en/wiki/Middlesex_County,_New_Jersey_Genealogy#Description)) : Accessed 30 Apr 2024)

For information on specifically Middlesex County's borders, read Chapter VII of [History of Middlesex County, New Jersey, 1664-1920, Volume 1](#) by Harold E. Pickersgill.

Gazetteer for the state of New Jersey:  
<https://www.loc.gov/item/01007747/> - by Thomas F. Gordon

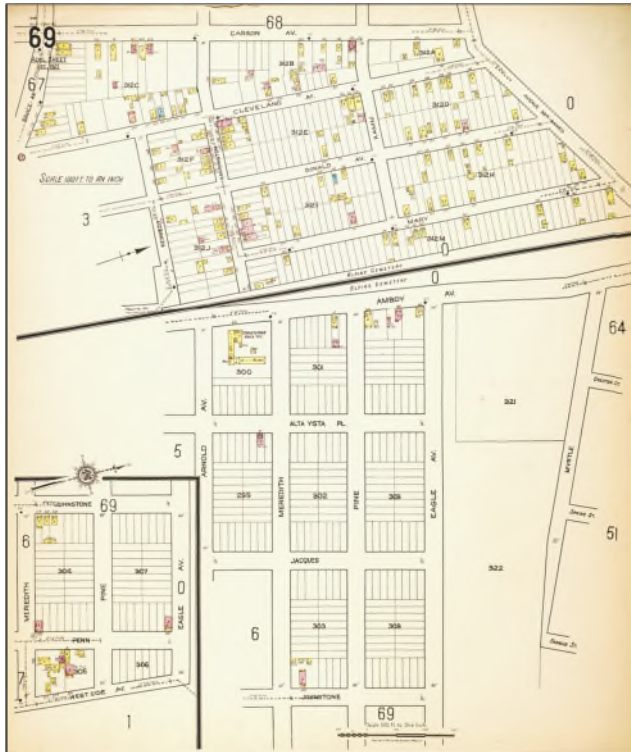
### Maps



*A cartographer's rendition of Middlesex County's boundaries in 1781 (courtesy Library of Congress, via Rutgers' Special Collections). Note the inconsistent, horizontally flipped coordinates, with Somerset to the east and Monmouth to the west.*

Rutgers University's Cartography Lab has collected several historical maps of Middlesex County, from before and after Mercer was formed. Some are collected online from Rutgers' special collections, and can be found on [this link](#). For a more broadly-sourced database, [Linkpendium has arranged maps](#) taken from various libraries around the county.

Sanborn Fire Maps of the area can be found at Princeton University Firestone Library's Special Collections, located in neighboring Mercer County. Descriptions of what databases contain can be found [online](#). **With the notable exception of the Scheide Special Collections, no advanced appointments are required.**



Sheet 69 of a 1921 Sanborn map of Perth Amboy. Courtesy of Princeton University Library

### Timeline of Major Events

*Timeline of the area including major government changes and events*

#### History<sup>4</sup>

1666	Piscataway was founded as King Charles II's parcel of land. Settled by Englishmen traveling south from Piscataqua River, part of the border between New Hampshire and Maine. <sup>5</sup>
1681	John Inian and fellow English investors purchased two lots totalling 10,000 acres of swampland from Lenni Lenape Indians, established Prigmore's Swamp. Renamed Inian's Ferry in 1713, and New Brunswick in 1724
March 7, 1683	Middlesex County founded as one of four counties in the province of East Jersey (along with Bergen, Essex, and Monmouth)
May 14, 1688	Somerset County formed from parts of Middlesex

<sup>4</sup> John P. Snyder, *Bulletin 67, The Story of New Jersey's Civil Boundaries* (<https://www.nj.gov/dep/njgs/enviroed/oldpubs/bulletin67.pdf>) : accessed 30 Apr 2024.

<sup>5</sup> "History of Piscataway," Piscataway government website ([https://www.piscatawaynj.org/departments/administration/history\\_of\\_piscataway.php#:~:text=Piscataway%20was%20owned%20by%20England,Philip%20Carteret%2C%20became%20resident%20governor.](https://www.piscatawaynj.org/departments/administration/history_of_piscataway.php#:~:text=Piscataway%20was%20owned%20by%20England,Philip%20Carteret%2C%20became%20resident%20governor.)) : accessed 30 Apr 2024.

October 31, 1693	Middlesex County partitioned into Piscataway, Perth Amboy, and Woodbridge
1702	Provinces of East and West Jersey unite into the Province of New Jersey
February 21, 1798	The Township Act of 1798 incorporated 104 New Jersey municipalities in 13 counties. Under this law, townships were granted the capacity for town meetings, a clerk, and a tax collector. New townships in Middlesex County included South Amboy, North Brunswick, South Brunswick, East Windsor, and West Windsor.
February 22, 1838	Mercer County formed out of neighboring counties, including Middlesex. East and West Windsor were both redistricted to Mercer County.
April 9, 1838	Monroe Township was carved out from portions of South Amboy, following a referendum. Later on, East Brunswick (Feb 28, 1860), Cranbury (Mar 7, 1872), and the borough of Jamesburg (Mar 19, 1887) were carved out from it. <sup>6</sup>
March 17, 1870	Raritan Township was created from parts of Piscataway and Woodbridge. Portions of the town later became the boroughs of Metuchen (1900) and Highland Park (1905).
November 10, 1954	Raritan Township is renamed Edison, after the inventor who worked there.

## History

William S. Stryker, *Officers and Men of New Jersey in the Revolutionary War*, 1872 ([https://www.google.com/books/edition/Official\\_Register\\_of\\_the\\_Officers\\_and\\_Me/4Yg-5sOYFxcC?hl=en&gbpv=1&printsec=frontcover](https://www.google.com/books/edition/Official_Register_of_the_Officers_and_Me/4Yg-5sOYFxcC?hl=en&gbpv=1&printsec=frontcover)) : accessed 2 May 2024. Compiled by then-Adjutant General of New Jersey; now available in full online. See the Dey/Duyts family lineage, with information streamlined by the [University of Houston](#).

*History of Middlesex County, New Jersey, 1664-1920* - Ancestry.com (taken from the book of the same name by John P. Wall): <https://www.ancestry.com/search/collections/15468/>

National Archives' holdings on Camp Kilmer: <https://www.archives.gov/nyc/exhibit/camp-kilmer>

- Located between Piscataway and Edison, Camp Kilmer was once a transportation hub for WWII troops. Later on, it was repurposed by the CIA to detain Hungarian immigrants fleeing 1956's Hungarian Revolution. The National Archives' Historical Record contains photographs taken primarily in 1945, when it was still primarily used by the military.

<sup>6</sup> Wikipedia, "Monroe Township, Middlesex County, New Jersey" ([https://en.wikipedia.org/wiki/Monroe\\_Township,\\_Middlesex\\_County,\\_New\\_Jersey](https://en.wikipedia.org/wiki/Monroe_Township,_Middlesex_County,_New_Jersey)) : accessed 30 Apr 2024

## Migration Routes



A map of the Delaware & Raritan Canal, a popular and efficient route to transport cargo ([mostly anthracite coal](#))<sup>7</sup> between Philadelphia and New York from 1834 to the canal's closure in 1932. Map courtesy of FamilySearch.

Even before this canal was built on its south bank, [the Raritan River was an important migration route on its own](#). The Raritan allowed for the distribution of agricultural products throughout Central Jersey, and troops moved along the Raritan during the American Revolution.

## Law and Government

NJ State Library resources collected in a [2014 blog post](#) by The Legal Genealogist, and the timeframes they cover<sup>8</sup>

- [New Jersey Charters and Treaties](#): 1664-1756
- [New Jersey Colonial Ordinances](#): 1704-1728
- [New Jersey Constitutions](#): each of the three separate constitutions penned in 1766, 1844, and 1947, plus details on the constitutional conventions surrounding them
- [New Jersey Session Laws](#): from the statutes of 1776 onward

<sup>7</sup> "A Brief History of the Delaware and Raritan Canal," NJ government website (accessed 30 Apr 2024)

<sup>8</sup> The Legal Genealogist, "New Jersey's Laws," 21 November 2014

(<https://www.legalgenealogist.com/2014/11/21/new-jerseys-laws/>) : accessed 3 May 2024

On its [government website](#), New Brunswick has archived ordinances ranging back to 2011. Ancestry.com keeps some of New Brunswick's earlier ordinances, following the 1730 charter of the city, in [this collection](#).

## Libraries and Archives

Alexander Library Special Collections (Rutgers-affiliated)

- **169 College Ave, New Brunswick, NJ**
- **(201) 932-7129**
- Pamphlets, signed copies of famous texts, diaries, etc. going back to the 1600s. Arguably the most comprehensive genealogical resource in all of New Jersey.
- East Asian Library contains texts written in Chinese, Japanese, and Korean vernaculars.
- The Special Collections are only open on Tuesdays and Wednesdays, from 10a-12:30p and 1:30p-4p, with an [appointment](#).

Middlesex County Archives Management building

- **95 Apple Orchard Road, North Brunswick, NJ**
- **(732) 422-3020**
- Most useful for affairs of county government

Kler Reading Room in the East Jersey Old Town Village<sup>9</sup>

- **1050 River Road, Piscataway, NJ**
- **(732) 745-3030 ext. 303**
- Genealogical and historical resources (including three-dimensional artifacts) from and about the Raritan Valley. An on-site genealogist will help visitors sift through the library, which also grants *free* access to Ancestry.com.
- Part of the East Jersey Old Town Village, an open-air museum modeled after the county's colonial era. The museum is open from 10 AM-4 PM on Wednesdays, Thursdays, and Fridays; open from 12-4 PM on Saturdays and Sundays; and closed on Mondays and Tuesdays. The Kler Reading Room is only available by a separate appointment.

New Jersey State Archives<sup>10</sup>

- **225 West State Street, Trenton, NJ**
- **(609) 984-2396**
- Vital records, land documents, probate records, military service papers dating back to 1664
- Searchable databases for marriage, death, land, probate, court, military, wartime and

---

<sup>9</sup> "Kler Reading Room," Middlesex County government website (<https://www.middlesexcountynj.gov/government/departments/departments-of-economic-development/the-arts-institute-of-middlesex-county/division-of-history-and-historic-preservation/kler-reading-room>) : accessed 30 Apr 2024.

<sup>10</sup> "Planning Your Visit," New Jersey State Archives, NJ government website (<https://nj.gov/state/archives/directions.html>) : accessed 30 Apr 2024



- photographs are available. Different records can be ordered online or via mail. See [https://wwwnet-dos.state.nj.us/DOS\\_ArchivesDBPortal/index.aspx](https://wwwnet-dos.state.nj.us/DOS_ArchivesDBPortal/index.aspx). Visit this page often for new searchable databases.<sup>11</sup>
- Available by [appointment](#). See site for current Microfilm Reading Room and Manuscript
- Reading Room hours.
- Parking: metered parking on West State Street or limited public parking in the State House Garage

## Genealogical Societies and Publications

Genealogical Society of New Jersey

- Edward Raser's compiled *New Jersey Graveyard and Gravestone Inscriptions Locators: Middlesex County*. Copies can be ordered online at: <https://www.gsnj.org/middlesex-county-locator/>

## Record Loss

There has been no substantial record loss in Middlesex County's history.

## Local History

Harold E. Pickersgill, [\*History of Middlesex County, New Jersey, 1664-1920, Volume 1\*](#)

[\*Perth Amboy\*](#) by Paul W. Wang and Katherine A. Massopust (Arcadia, 2009) tracks the town's more modern developments, especially focused around its central artery in Smith Street.

[\*Edison\*](#) by Stacy E. Spies (Arcadia, 2001). Part of the Images of America series, this book arranges photos preserved by the Metuchen-Edison Historical Society and the National Park Service.

## Reference Books

[\*First Presbyterian Church of New Brunswick, N.J.: A Historical Discourse\*](#).

First written by Thomas Nichols in 1876, reprinted in 2019. Available online in the FamilySearch databases.

---

<sup>11</sup> "Searchable Database Index," New Jersey State Archives, NJ government website ([https://wwwnet-dos.state.nj.us/DOS\\_ArchivesDBPortal/index.aspx](https://wwwnet-dos.state.nj.us/DOS_ArchivesDBPortal/index.aspx) : accessed 8 May 2024).

# Record Collections

## General Collections

Ancestry:

[https://www.ancestry.com/search/places/usa/new\\_jersey/middlesex/](https://www.ancestry.com/search/places/usa/new_jersey/middlesex/)

Family Search:

[https://www.familysearch.org/en/wiki/Middlesex\\_County,\\_New\\_Jersey\\_Genealogy](https://www.familysearch.org/en/wiki/Middlesex_County,_New_Jersey_Genealogy)

FindMyPast:

<https://search.findmypast.com/results/world-images/new-jersey-vital-records-browse?county=middlesex%20county>

Scarlet and Black Digital Archive: <https://scarletandblack.rutgers.edu/archive/>

- Specifically documents the history of race at Rutgers, in New Brunswick, and the surrounding Middlesex County. Holdings include [New Jersey Slavery Records](#) and [Middlesex County Book of Manumissions and Removals \(Manumission of Slaves, 1800-1825\)](#). Some information kept in Alexander Library's Special Collections.

New Jersey State Archives: vital records, probate records, court records, land records, military records. See above for record request and appointment information.

## Bible Records and Compiled Genealogies

<https://www.gsnj.org/gsnj-collections/bible-records-index/>

- Per the GSNJ website, the Bible and Family records collection usually housed in the Alexander Library have been temporarily moved to Trenton's New Jersey State Archives. Visit <https://www.gsnj.org> for the current status of this collection.

## Cemetery Records

- An open source list of cemeteries in Middlesex County can be found here: <http://www.usgwarchives.net/nj/middlesex/cemetery.htm>.
- The Genealogical Society of New Jersey also provides a list of the county's cemeteries, last updated in 2011. [https://www.gsnj.org/wp-content/uploads/2016/09/GSNJ\\_CI\\_Middlesex.pdf](https://www.gsnj.org/wp-content/uploads/2016/09/GSNJ_CI_Middlesex.pdf)

## Census Records and Substitutes

[https://data.census.gov/profile/Middlesex\\_County,\\_New\\_Jersey?q=050XX00US34023](https://data.census.gov/profile/Middlesex_County,_New_Jersey?q=050XX00US34023)

- Current census data.

<https://dspace.njstatelib.org/server/api/core/bitstreams/9f72902b-1bf9-4af1-bdd3-dc91ffb0f00/content>



- From an estimate in the 1790 census, Middlesex had by a wide margin the highest percentage of Scottish residents in New Jersey. 33% of its residents were Scottish; an additional 35% had either English or Welsh ancestry.

<https://www.gsnj.org/new-jersey-state-censuses/>

- New Jersey State Censuses, 1855–1915 (2017 Update)

### Church Records

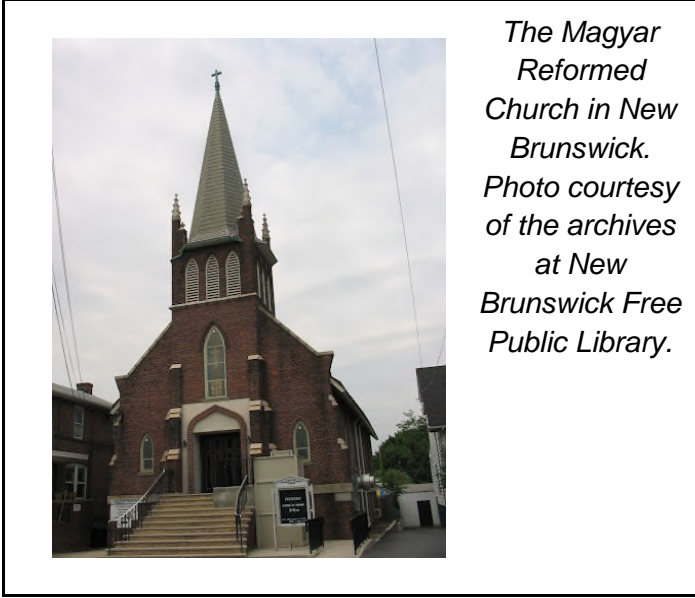
Pennsylvania and New Jersey, Church and Town records, 1669-2013 on Ancestry

<https://www.ancestry.com/search/collections/2451/>

LDS Genealogy has compiled a list of Middlesex County's church records, encompassing denominations from Episcopalian to Reformed Dutch to Presbyterian. Several of these indices are preserved online. <https://ldsgenealogy.com/NJ/Middlesex-County-Church-Records.htm>

Some that stand out for different denominations include:

- Seventh-Day Baptists
  - [Piscataway Seventh Day Baptist Church Marriage Records, 1745-1776](#). Notes that this church broke off from the Piscataqua Baptist Church circa 1700 or 1701.
- Episcopalian
  - [A brief history of St. Peter's church in Perth Amboy, New Jersey, 1685-1945](#) - NJ's oldest episcopal parish, and the site of the state's first gravestone. Book held in several places, but most locally in the Rutgers University Libraries system
- Presbyterian
  - The most extensive records stem from Cranbury, Metuchen, and New Brunswick's First Presbyterian Churches. In Perth Amboy and New Brunswick, historical centers of Hungarian immigration, there are Presbyterian churches that conduct services in Hungarian.
  - [A brief history of the Magyar Ev. Ref. Presbyterian Church, New Brunswick, New Jersey](#)
- Reformed Dutch
  - David Tourison contributed "[New Brunswick Reformed \(Dutch\) Church Marriage Records, 1794-1799](#)" to the USGenWeb Archives
  - Other Reformed Dutch church records are likely to be found in the library of the Holland Society of New York



For archives of different religions' houses of worship, check the files housed in the New Brunswick Free Public Library, on 60 Livingston Ave:  
[http://www.nbfplarchive.org/nbrevitalization/files/nb\\_images/churches\\_public\\_art\\_schools/churches/](http://www.nbfplarchive.org/nbrevitalization/files/nb_images/churches_public_art_schools/churches/)

### **Court Records**

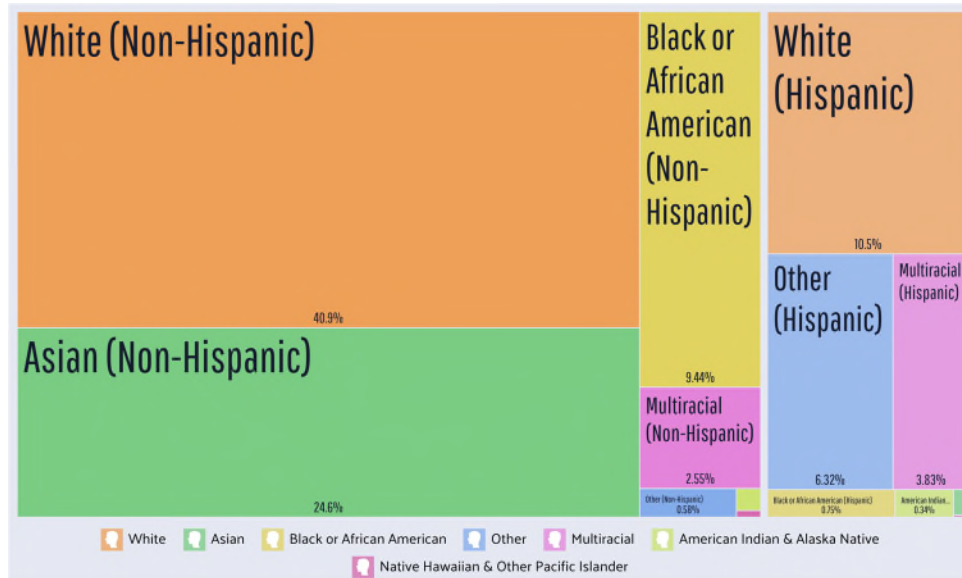
The following records can be requested via the search form at [https://wwwnet-dos.state.nj.us/DOS\\_ArchivesDBPortal/index.aspx](https://wwwnet-dos.state.nj.us/DOS_ArchivesDBPortal/index.aspx) or in-person.

- New Jersey State Archives, Petitions for Peddler's Licenses and Charity, 1733-1814
- Court of Common Pleas/Court of General Quarter Sessions Case Files, 1741-1888
- Tavern Licenses, 1758-1826; Judgments, 1799-1825<sup>12</sup>

---

<sup>12</sup> "Middlesex County - Clerk's Office, Courts & Miscellaneous," New Jersey State Archives, NJ government website (<https://www.nj.gov/state/archives/catcmiclerk.html> : accessed 8 May 2024).

## Ethnic Records



The racial makeup of Middlesex County as of 2021 ([visualization courtesy of Data USA](#))

Especially prominent ethnic groups in Middlesex County include:

- Indian Americans
- Mexican Americans
- Dominican Americans
- Hungarian Americans<sup>13</sup>

While few record collections exist specifically for Middlesex County’s minority groups, one can still find certain resources about their local histories. Rutgers University houses historical newspapers written in minority languages, such as microfilm issues of [Middlesex Megyei Magyar Hírlap](#) (Middlesex County Hungarian News), which ran in Perth Amboy and New Brunswick at least until 1952.

## Immigration and Naturalization

Carl Boyer, *Ship passenger lists : New York and New Jersey, 1600-1825*. Can check library availability [here](#).

- The Herriott Heritage Foundation excerpted the log of passengers aboard the tumultuous 1685 of the ship Henry and Francis. The Henry and Francis brought exiled Scottish covenanters to Woodbridge and Perth Amboy, where the journey’s survivors build up plantations: <https://www.herriottheritage.org/pdf/henryandfrancis.pdf>

<sup>13</sup> Anastasia R. Mann, “Crossroads of the World: New Americans in Middlesex County, New Jersey,” September 2011 (<https://eagleton.rutgers.edu/wp-content/uploads/2019/08/Crossroads-of-World-Middlesex-County-NJ.pdf>) : Accessed 21 April 2024.

Office of the County Clerk (75 Bayard Street, 4th floor, New Brunswick)

- The County Clerk's office contains Middlesex's naturalization records from 1806 to 1991.
- Naturalization records for the 1926-1958 period can be searched and downloaded for free from <https://mcrecords.co.middlesex.nj.us/recordssearch/>. Enter **PETNAT** in the Document Type field on the search form.
- For naturalization records outside the 1926-1958 period, contact the [County Clerk's office](#) through a written request including:
  - Name of the naturalized person (including various possible spellings)
  - Date of birth
  - Approximate date of naturalization
  - Address at time of naturalization
  - Number<sup>14</sup>

New Jersey, U.S., County Naturalization Records, 1749-1986 on Ancestry.com:

<https://www.ancestry.com/search/collections/60084/> - menu drops down to Middlesex

New Jersey State Archives, Court of Common Pleas, Petitions for Naturalization and Declarations of Intention, 1794-1906. These records can be requested via the Archives' search form at [https://wwwnet-dos.state.nj.us/DOS\\_ArchivesDBPortal/index.aspx](https://wwwnet-dos.state.nj.us/DOS_ArchivesDBPortal/index.aspx) or in-person.<sup>15</sup>

New Jersey Historical Records Survey Project: *Guide to naturalization records in New Jersey* (from 1941). To check library availability, click here:

[https://rutgers.primo.exlibrisgroup.com/discovery/fulldisplay?docid=alma991002400169704646&context=L&vid=01RUT\\_INST:01RUT&lang=en](https://rutgers.primo.exlibrisgroup.com/discovery/fulldisplay?docid=alma991002400169704646&context=L&vid=01RUT_INST:01RUT&lang=en)

Anastasia R. Mann, "Crossroads of the World: New Americans in Middlesex County, New Jersey," September 2011 (<https://eagleton.rutgers.edu/wp-content/uploads/2019/08/Crossroads-of-World-Middlesex-County-NJ.pdf>) : Accessed 21 April 2024.

- Affiliated with Rutgers' Eagleton Institute of Politics. Genealogically useful for identifying modern trends in immigration, such as the large South Asian and Latino communities; of note, no Latin American country accounts for more than 15% of Middlesex County's total Latino population.

## Land Records

Office of the County Clerk:

<https://www.middlesexcountynj.gov/government/departments/department-of-community-services/office-of-county-clerk/recording-services/land-records>

---

<sup>14</sup> Office of the Middlesex County Clerk, "Naturalization Records" (<https://www.middlesexcountynj.gov/government/departments/department-of-community-services/office-of-county-clerk/naturalization-records>) : accessed 27 Apr 2024

<sup>15</sup> "Middlesex County - Clerk's Office, Courts & Miscellaneous," New Jersey State Archives, NJ government website (<https://www.nj.gov/state/archives/catcmiclerk.html>) : accessed 8 May 2024).

The Office of the County Clerk contains a public-accessible records room that includes land records. Otherwise, you can search online for deeds since 1929, mortgages since 1950, and other documents since 1958, using this link:

<https://mcrecords.co.middlesex.nj.us/recordssearch/>

The following records can be requested via the New Jersey State Archives' search form at [https://wwwnet-dos.state.nj.us/DOS\\_ArchivesDBPortal/index.aspx](https://wwwnet-dos.state.nj.us/DOS_ArchivesDBPortal/index.aspx) or in-person:

- Deeds, 1784-1901 and Indexes, 1784-1922
- Mortgages, 1766-1861 and Indexes, 1766-1922 and Ancient Deeds, 1877-1942.<sup>16</sup>

### Legislative Records

New Jersey State Archives: Petitions and Other Papers relating to County Courthouses and the Establishment of Counties, 1760-1858

- An online guide to the archived petitions can be found here:  
<https://www.nj.gov/state/archives/guides/sle00007.pdf>

The New Jersey State Library [digitally archives](#) legislative histories, which outline the motions through which state laws got passed. These records are tidily arranged by year, to convey the evolution of New Jersey's laws and state government.<sup>17</sup>

### Military Records

- NJ State Library: Official Register of the Officers and Men of New Jersey  
([https://www.njstatelib.org/slic\\_files/searchable\\_publications/reg/NJREGn343.html](https://www.njstatelib.org/slic_files/searchable_publications/reg/NJREGn343.html))
- Ancestry.com: Compiled Records of the Middlesex County, New Jersey Militia  
<https://www.ancestry.com/search/collections/49042/>
- The Office of the County Clerk (75 Bayard Street, 4th floor, New Brunswick) archives 3 reels of Civil War records (1861-1865) and 3 reels of veterans' grave reports from around 1790 to around 1940.<sup>18</sup>

### Newspapers and Directories

<https://libguides.njstatelib.org/digitized-newspapers/middlesex>

- An online article from the NJ State Library, affiliated with Thomas Edison State University, indexes where newspaper copies can be found in every library in the county (and whether or not access is free). Also provides links to any free online collections.

---

<sup>16</sup> "Middlesex County - Clerk's Office, Courts & Miscellaneous," New Jersey State Archives, NJ government website (<https://www.nj.gov/state/archives/catcmiclerk.html>) : accessed 8 May 2024).

<sup>17</sup> NJ State Library, *New Jersey Legislative Histories* (<https://repo.njstatelib.org/handle/10929.1/2>) : accessed 3 May 2024.

<sup>18</sup> New Jersey Department of State, "Middlesex County – Clerk's Office, Courts & Miscellaneous" (<https://www.nj.gov/state/archives/catcmiclerk.html>) : accessed 30 Apr 2024.

The **Woodbridge Public Library** (1 George Frederick Plaza, Woodbridge, NJ 07095) contains freely available copies of several newspapers: see <https://www.digifind-it.com/woodbridge/#> for a collection of copies online.

Other Middlesex County libraries with archival newspaper holdings include:

- Cranbury Public Library: 30 Park Place West, Cranbury, NJ 08512
- Metuchen Borough Public Library: 480 Middlesex Ave, Metuchen, NJ 08840
- New Brunswick Free Public Library; 60 Livingston Ave, New Brunswick, NJ 08901
- Sadie Pope Dowdell Public Library; 100 Governor Harold G. Hoffman Plaza, South Amboy, NJ 08879
- South Brunswick Public Library; 110 Kingston Ln, Monmouth Junction, NJ 08852
- South Plainfield Public Library; 2484 Plainfield Ave, South Plainfield, NJ 07080

See LibGuides page above for their holdings.

### Probate Records

Probate records can be obtained from the Middlesex County Surrogate Court.<sup>19</sup>

- A searchable probate index is available at <https://surrogatesearch.co.middlesex.nj.us/SurrogateSearch/default.aspx>.
- Plain paper copies of probate records can be downloaded for free for most probate records. For copies of guardianships and other sealed records, contact the Surrogate Court.
- Certified copies must be requested via mail to **Middlesex County Surrogate, PO Box 790, New Brunswick 08903**, complete with the necessary payment for the information requested
  - Estate search: \$10
  - Copies: \$3 per page
  - Certified copy: \$50 for first two pages, \$5 for each additional page
  - Exemplified copy: \$75 for administration; \$84 for first two pages of will, \$5 per additional page
  - Release and refunding bond: \$10 for first two pages, \$5 for each additional page
  - Disclaimer: \$5 per page
  - Filing and recordings of all documents not listed: \$5 per page
  - Proof of mailing: \$5 per page
  - Summons: \$25 per page
- If in-person assistance is required, contact the Middlesex County Surrogate Court at **732-745-3055** to schedule an appointment.
  - Office of the Surrogate
  - County Administration Building
  - 1<sup>st</sup> Floor
  - 75 Bayard Street
  - New Brunswick, NJ 08901

---

<sup>19</sup> Middlesex County, New Jersey Office of the Surrogate, "Records Department" (<https://www.middlesexcountynj.gov/government/departments/departments-of-community-services/office-of-the-surrogate/records-department>) : Accessed 3 May 2024.



- **Requires an appointment;** open Monday-Friday from 8 am - 3:45 pm, and on Tuesday late nights from 8 am-6 pm.

FamilySearch.org: New Jersey, Middlesex County Probate Records, 1830-1921

- [https://www.familysearch.org/en/wiki/New\\_Jersey,\\_Middlesex\\_County\\_Probate\\_Records\\_-\\_FamilySearch\\_Historical\\_Records#To\\_Browse\\_This\\_Collection](https://www.familysearch.org/en/wiki/New_Jersey,_Middlesex_County_Probate_Records_-_FamilySearch_Historical_Records#To_Browse_This_Collection): requires account to view waypoints

New Jersey State Archives, Probate indexes and index cards (up to 1951). These records can be requested via the Archives' search form at [https://wwwnet-dos.state.nj.us/DOS\\_ArchivesDBPortal/index.aspx](https://wwwnet-dos.state.nj.us/DOS_ArchivesDBPortal/index.aspx) or in-person.<sup>20</sup>

### **Vital Records (Birth, Marriage, Death)**

Birth, marriage and death registration began on May 1, 1848. Records were recorded in a ledger format through May 1878. Certificates were issued beginning in June 1878.

The New Jersey State Archives has birth records issued up to 1923, marriage records issued up to 1950 and death records issued up to 1964. NJSA can perform searches of and provide certified copies of births up to 1923, marriages up to 1940 and deaths to 1940. The later marriage and death years can be searched in-person. (as of 10 May 2024)

Genealogy copies of birth records issued after 1923, marriage records issued after 1950 and death records issued after 1964 must be ordered from the New Jersey Department of Vital Statistics; genealogy copies are called "Certifications." Certified copies of birth records issued after 1923, marriage records issued after 1940 and death records issued after 1940 must be ordered from the New Jersey Department of Vital Statistics. Certified or Certifications can be ordered online, via mail or in person. See <https://www.nj.gov/health/vital/> for instructions and costs. The walk-in center is located at 140 E. Front Street in Trenton.

Alternatively, vital records may be obtained through any of the [townships' individual registrars](#).

There are no documented Gretna Greens in the county.

### **Tax Records**

New Jersey State Archives Tax Ratables collection, 1773-1822.

- A guide to the Middlesex County ratables in their collection can be found here: <https://www.nj.gov/state/archives/guides/sas00001f.pdf>
- The actual records can be requested via the Archives' search form at [https://wwwnet-dos.state.nj.us/DOS\\_ArchivesDBPortal/index.aspx](https://wwwnet-dos.state.nj.us/DOS_ArchivesDBPortal/index.aspx) or in-person.<sup>21</sup>

---

<sup>20</sup> "Searchable Database Index," New Jersey State Archives, NJ government website ([https://wwwnet-dos.state.nj.us/DOS\\_ArchivesDBPortal/index.aspx](https://wwwnet-dos.state.nj.us/DOS_ArchivesDBPortal/index.aspx) : accessed 8 May 2024).

<sup>21</sup> "Searchable Database Index," New Jersey State Archives, NJ government website ([https://wwwnet-dos.state.nj.us/DOS\\_ArchivesDBPortal/index.aspx](https://wwwnet-dos.state.nj.us/DOS_ArchivesDBPortal/index.aspx) : accessed 8 May 2024).

For up-to-date tax records, the [taxrecords-nj.com](https://taxrecords-nj.com) website works just as effectively for Middlesex County as it does for any other of the state's 21 counties. [https://taxrecords-nj.com/pub/cgi/prc6.cgi?district=1201&ms\\_user=ctb12](https://taxrecords-nj.com/pub/cgi/prc6.cgi?district=1201&ms_user=ctb12)

Otherwise, tax records in New Jersey are usually detailed within land records. The Office of the County Clerk should contain information on taxation.